



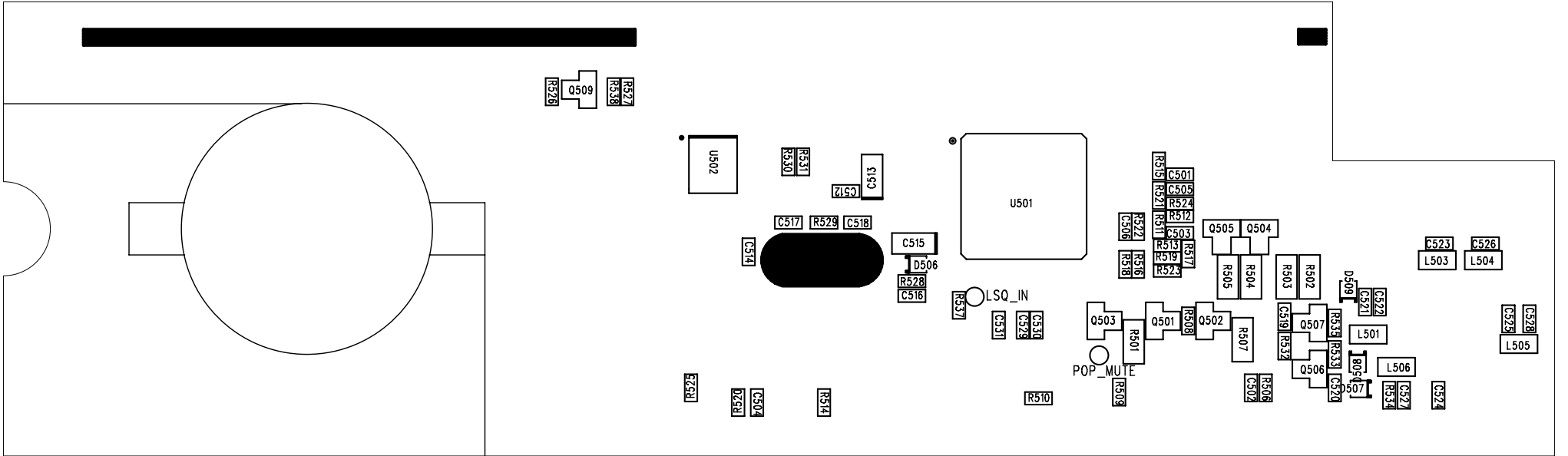
# ALBRECHT®

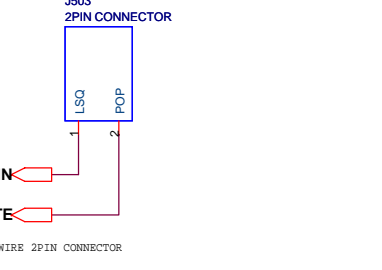
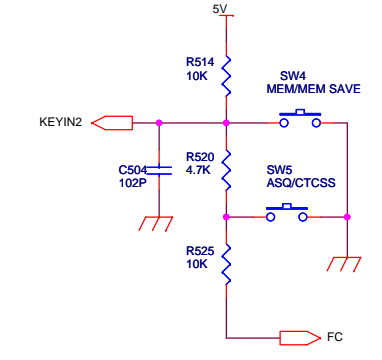
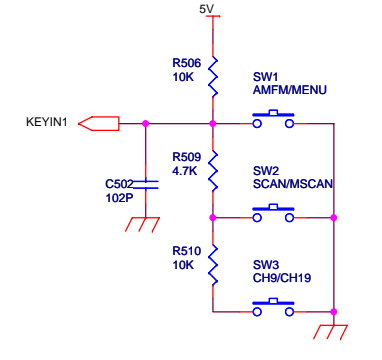
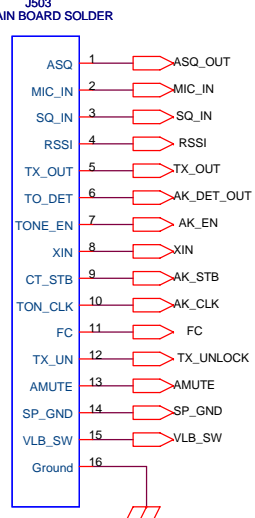
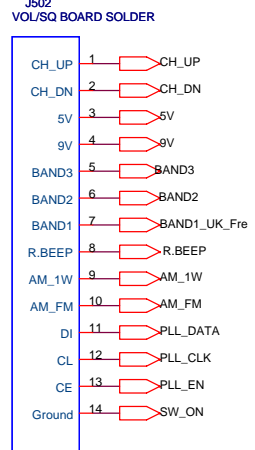
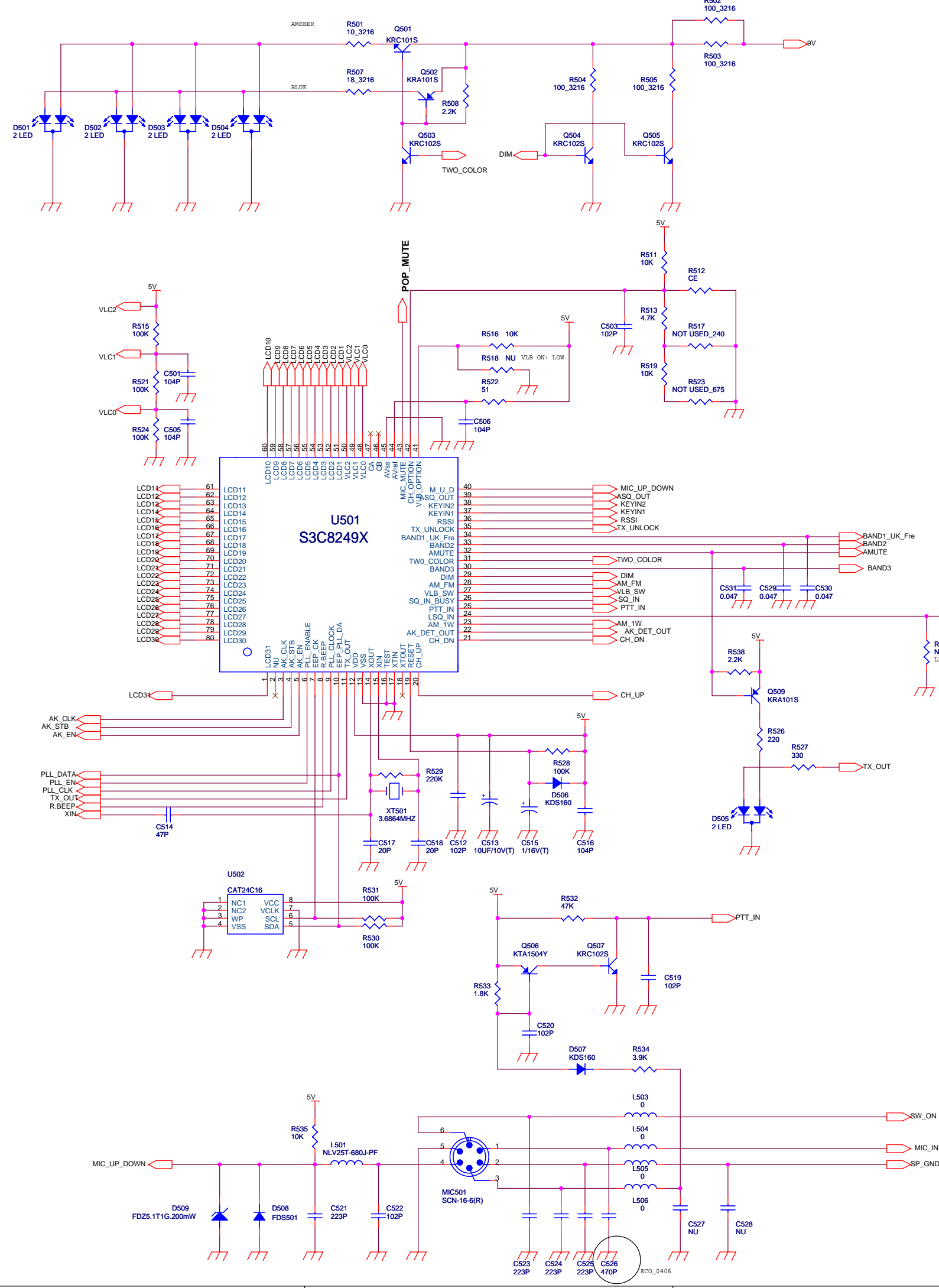
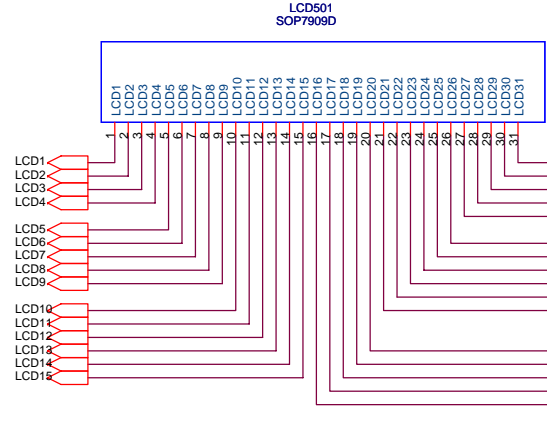
## CB Radio AE 6490

### SERVICE MANUAL

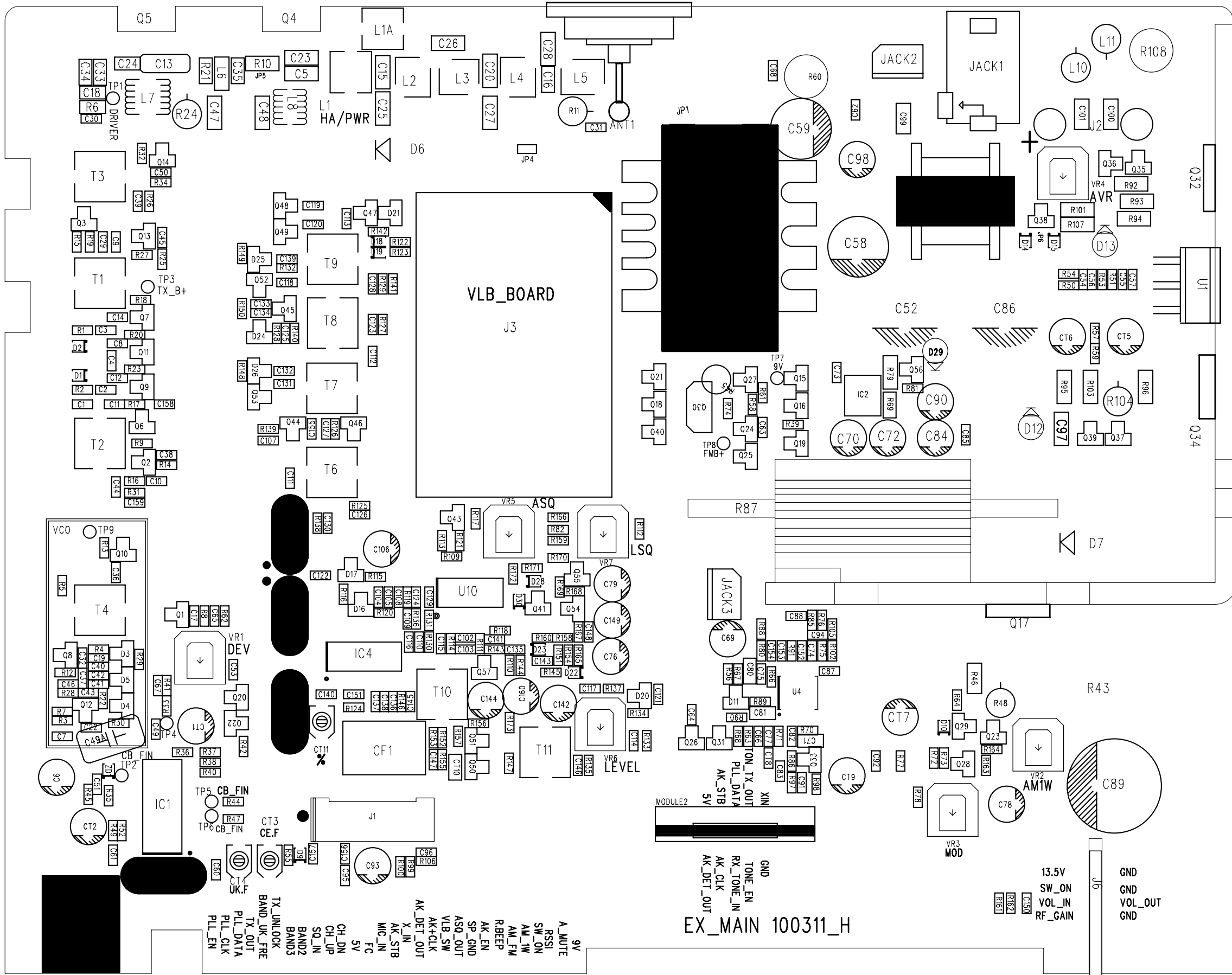
**4 W - AM  
Ready**  
for New  
EU-Standard

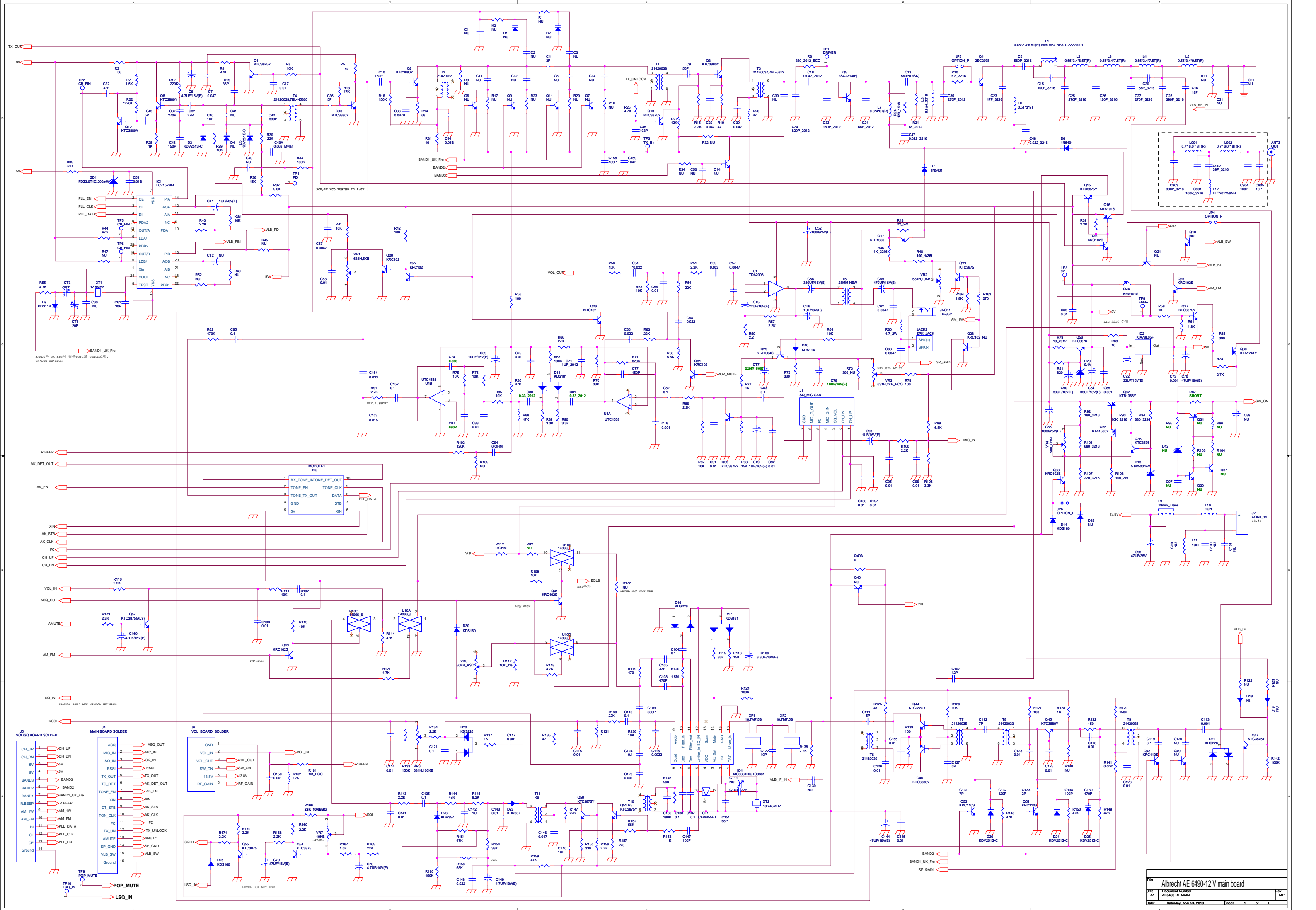






Title AE6490-CPU-Frontpanel-Circuit		
Size A2	Document Number AE6490 CPU	Rev MP
Date: Tuesday, April 06, 2010	Sheet 1 of 1	





PLL\_EN  
 PLL\_CLK  
 PLL\_DATA  
 PDA2  
 PDA1  
 LD/A  
 PDB2  
 LDB/  
 A/B  
 XIN  
 XOUT  
 TEST  
 PDB1

R.BEEP  
 AK\_DET\_OUT  
 AK\_EN  
 XIN  
 AK\_STB  
 AK\_CLK  
 FC  
 CH\_UP  
 CH\_DN  
 VOL\_IN  
 ASQ\_OUT  
 AMUTE  
 AM\_FM  
 SQL\_IN

**JS VOL/SQ BOARD SOLDER**  
 CH\_UP  
 CH\_DN  
 5V  
 9V  
 BAND3  
 BAND2  
 BAND1  
 R.BEEP  
 AM\_1W  
 AM\_FM  
 DI  
 CL  
 CE  
 Ground

**MODULE1**  
 RX\_TONE\_INTONE\_DET\_OUT  
 TONE\_EN  
 TONE\_CLK  
 TONE\_TX\_OUT  
 DATA  
 STB  
 GND  
 5V  
 XIN

**JE VOL\_BOARD\_SOLDER**  
 GND  
 VOL\_IN  
 VOL\_OUT  
 SW\_ON  
 13.8V  
 RF\_GAIN

**Änderungsanweisung für AE 6490/91 - falls nebeneinander stehende LKW sich nicht in AM hören können**

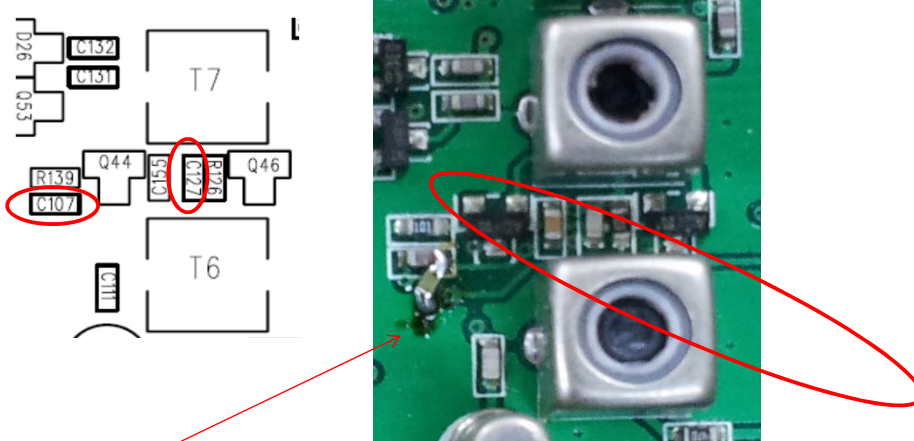
Following capacitor change can solve strong signal behaviour problems in AM

Folgende Kondensatoränderung beseitigt das bei AM Empfang feststellbare Großsignalproblem.

**1. Modification**

Description	Location	Original	Add or change - Hinzufügen
Chip Ceramic	C127	5PF	180PF
Chip Ceramic	C107	12PF	change to 6 pf or keep value as it is - auf 6 pF ändern oder Wert unverändert lassen

**2. Location**



But The C127 position is not easy modify because The solder iron can't touch it.

So we are change of modify, Add Chip ceramic 180PF from C107 to Ground.

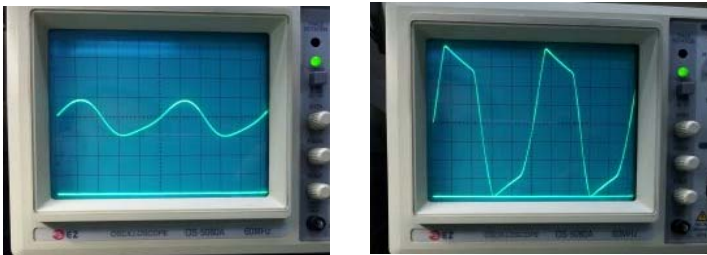
Da man schlecht an C 127 löten kann, ist es einfacher, 180 pF zusätzlich an gezeigter Stelle einzulöten.

**3. Measurement result.**

Test input condition : AM60%, RF output = 0 dBm, measurement channel frequency.

Before)

After)



**4. Circuit.**

