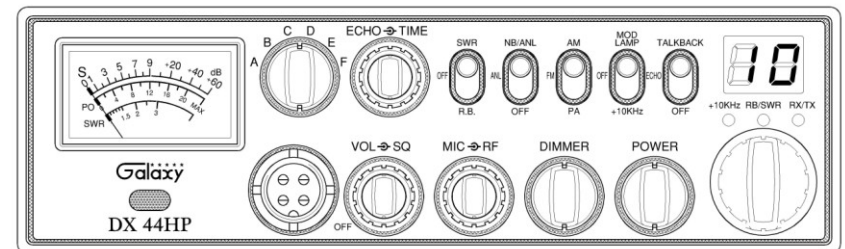


Galaxy

DX 44HP



10 Meter Amateur Mobile Transceiver

OWNER'S MANUAL

Downloaded from www.cbradio.nl

Printed In Taiwan
P/N:A412308COA

TABLE OF CONTENTS

| Specification | Page |
|--|------|
| Specification | 2 |
| Installation | |
| Location | 4 |
| Mounting the Radio | 4 |
| Ignition Noise Interference | 5 |
| Antenna | 5 |
| Tuning the Antenna for Optimum SWR | 6 |
| External Speaker | 6 |
| Operation | |
| Control Functions | 7 |
| A. Front Panel | 7 |
| B. Rear Panel | 10 |
| Press-To-Talk Microphone | 11 |
| Operating Procedure to Receive | 11 |
| Operating Procedure to Transmit | 11 |
| Alternate Microphones and Installation | 12 |
| Warranty | 18 |

Specifications

GENERAL

| | |
|-----------------------------|---|
| Frequency Range | 28.015 to 28.465 MHz |
| Frequency Control | Phase Lock Loop (PLL) synthesizer. |
| Frequency Tolerance | 0.005% |
| Frequency Stability | 0.001% |
| Operating Temperature Range | -20 °C to +50 °C. |
| Microphone | Plug-in dynamic; with push-to-talk switch and coiled cord. |
| Input Voltage | 13.8V DC nominal, 15.9V max, 11.7V min. (Positive or negative ground). |
| Current | <i>Transmit:</i> AM/FM Hi Power _ 10A. <i>Receiver:</i> Squelched, _ 0.3A. |
| Size | Maximum Audio output, _ 0.7A. |
| Weight | 2-3/8" (H) x 7-7/8" (W) x 9-1/4" (D). 5.0 lbs. |
| Antenna Connector | UHF, SO239 |
| Meter | Illuminated; indicates relative output power, received signal strength and SWR. |

TRANSMITTER

| | |
|--------------------|--|
| Power output | AM/FM – Variable; 10 watt maximum |
| Modulation | Modulation: AM. Variable capacitance 90% ± 10% Frequency Modulation: FM. 4KHz ± 1KHz |
| Spurious Emissions | 50 dB |
| Frequency Response | AM and FM: 300 to 2500 Hz. |
| Output Impedance | 50 ohms, unbalanced |
| Output Indicators | Meter- shows relative RF output power. Transmit LED glows red when transmitter is in operation. |

RECEIVER

| | |
|---------------------------------|--|
| Sensitivity | AM: 0.5 μ V for 10 dB (S+N)/N at greater than $\frac{1}{2}$ -watt of audio output. FM: 1.0 μ V for 20 dB (S+N)/N at greater than $\frac{1}{2}$ -watt of audio output. |
| Selectivity | AM/FM: 6 dB @ 3 KHz, 50 dB @ 9 KHz. |
| Image Rejection | More than 65 dB. |
| IF Frequency | AM/FM: 10.695 MHz 1 st IF, 455 KHz 2 nd IF |
| Adjacent-Channel Rejection | 60 dB AM |
| RF Gain Control | 45 dB adjustable for optimum signal reception. |
| Automatic Gain Control (AGC) | Less than 10 dB change in audio output for inputs from 10 to 1,000mV. |
| Squelch | Adjustable; threshold less than 0.5 μ V. |
| ANL | Switchable |
| Noise Blanker | RF type |
| Audio Output Power | 4 watts into 8 ohms. |
| Frequency Response | 300 to 2500 Hz. |
| Built-in Speaker | 8 ohms, round. |
| External Speaker (Not Supplied) | 8 ohms; disables internal speaker when connected. |

Installation

LOCATION

Plan the location of the transceiver and microphone bracket before starting the installation. Select a location that is convenient for operation and does not interfere with the driver or passengers in the vehicles. In automobiles, the transceiver is usually mounted below the dash panel, with the microphone bracket beside it.

MOUNTING THE RADIO

Your transceiver is supplied with a universal mounting bracket. When mounting the bracket and radio to your car, make sure it is mechanically strong. Also provide a good electrical connection to the chassis of the vehicle. Proceed as follows to mount the transceiver:

1. After you have determined the most convenient location in your vehicle, hold the transceiver with mounting bracket in the exact location desired. If nothing will interfere with mounting it in the desired position, remove the mounting bolts. Before drilling the holes, make sure nothing will interfere with the installation of the mounting bolts.
2. Connect the antenna coax connector to the standard antenna connector on the rear panel of the radio. Most antennas are terminated with a type PL-259 connector.
3. Connect the red DC power input wire (with the fuse) to +13.8V DC. This wire extends from the rear panel. In automatic installation, +13.8V DC is usually obtained from the accessory contact on the ignition switch. This prevents the set being left on accidentally when the driver leaves the car and also permits operating the unit without the engine running. Locate the accessory contact on most ignition switches by tracing the power wire from the AM broadcast receiver in the car.
4. Connect the black lead to -13.8V DC. This is usually the chassis of the car. Any convenient location with good electrical contact (remove paint) may be used.
5. Mount the microphone bracket on the right side of the transceiver or near the transceiver, using two screws supplied. When mounting in an automobile, place the bracket under the dash so the microphone is readily accessible.

IGNITION NOISE INTERFERENCE

Use of a mobile receiver at low signal levels is normally limited by the presence of electrical noise. The primary source of noise in automobile installations is from the generator and ignition system in the vehicle. Under most operating conditions, when signal level is adequate, the background noise does not present a serious problem. Also, when extremely low level signals are being received, the transceiver may be operated with vehicle engine turned off. The unit requires very little current and therefore will not significantly discharge the vehicle battery.

Even though the transceiver has ANL and NB controls, in some installations ignition interference may be high enough to make good communications impossible. The electrical noise may come from several sources. Many possibilities exist and variations between vehicles require different solutions to reduce the noise.

ANTENNA

A vertically polarized, quarter-wavelength whip antenna provides the most reliable operation and greatest range. Shorter, loaded-type whip antennas are more attractive, compact and adequate for applications where the maximum possible distance is not required. Also, the loaded whips do not present the problems of height imposed by a full quarter-wavelength whip.

Mobile whip antennas utilize the metal body of the vehicle as a ground plane. When mounted at a corner of the vehicle they are slightly directional, in the direction of the body of the vehicle. For all practical purpose, however, the radiation pattern is nondirectional. The slight directional characteristic will be observed only at extreme distance. A standard antenna connector (type SO239) is provided on the transceiver for easy connection to a standard PL 259 cable termination.

If the transceiver is not mounted on a metal surface, it is necessary to run a separate ground wire from the unit to a good metal electrical ground in the vehicle. When installed in a boat, the transceiver will not operate at maximum efficiency without a ground plate, unless the vessel has a steel hull.

Before installing the transceiver in a boat, consult your dealer for information regarding an adequate grounding system and prevention of electrolysis between fittings in the hull and water.

NOTE

THE PROPER SETTING IS ACHIEVED WHEN THE SWR IS 1.5 OR BELOW, AND WHEN IT HAS THE SIMILAR READING FOR CHANNELS 1 AND 40.

If you are having difficulties in adjusting your antenna, check the following:

- A. All doors must be closed when adjusting the antenna.
- B. Make sure the antenna base is grounded.
- C. Check your coaxial cable routing (it may be pinched when routed into the car).
- D. Try a different location on your car (keeping in mind the radiation pattern you wish)
- E. Is the antenna perfectly vertical?
- F. Try a different location in your neighborhood. Stay away from large metal objects when adjusting (metal telephone or light posts, fences, etc.).

NOTE

The transceiver will operate into an SWR of 2 to 1 indefinitely and sustain an SWR of 20:1 for a maximum of 5 minutes at rated operating conditions.

EXTERNAL SPEAKER

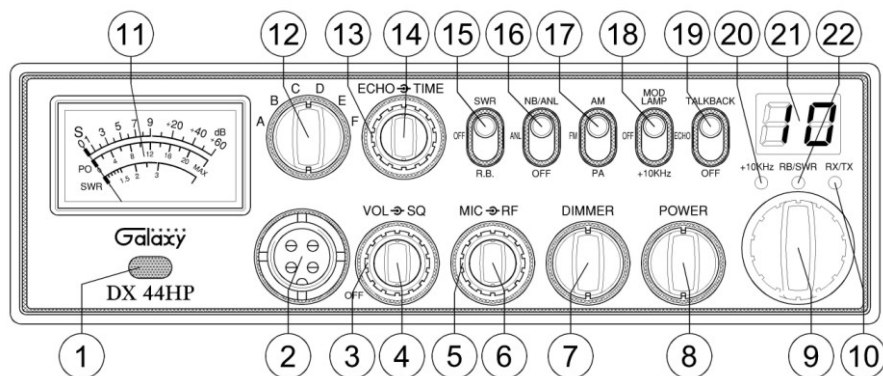
The external speaker jack (EXT.SPK) on the rear panel is used for remote receiver monitoring. The external speaker should have 8 ohms impedance and be able to handle at least 4 watts. When the external speaker is plugged in, the internal speaker is disconnected.

Operation

CONTROL FUNCTIONS

There are fifteen controls and six indicators on the front panel of your transceiver.

FRONT PANEL

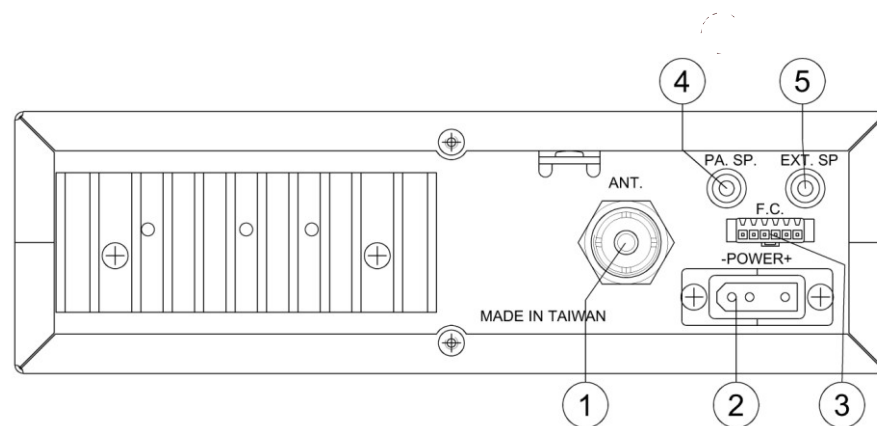


- 1. MOD LAMP:** When switched on, this Modulation indicator will illuminate as you speak into the microphone. When you speak louder, it appears bright because it is on nearly 100 percent of the time and when you speak softer, it appears dimmer because it is flickering on and off. It does not glow at all when there is no modulation. This lamp operates in all modes.
- 2. MICROPHONE JACK:** Used to connect microphone for voice source.
- 3. SQUELCH CONTROL (outer dual concentric):** This control is used to cut off or eliminate receiver background noise in the absence of an incoming signal. For maximum receiver sensitivity it is desired that the control be adjusted only to the point where the receiver background noise or ambient background noise is eliminated. Turn fully counterclockwise then slowly clockwise until the receiver noise disappears. Any signal to be received must now be slightly stronger than the average received noise. Further clockwise rotation will increase the threshold level which a signal must overcome in order to be heard. Only strong signals will be heard at a maximum clockwise setting.
- 4. OFF/ON/VOLUME CONTROL (inner dual concentric):** Turn clockwise to apply power to the unit and to set the desired listening level. During normal operation, the VOLUME control is used to adjust the output level obtained either at the transceiver speaker or the external speaker, if used.

- 5. RF GAIN CONTROL: (outer dual concentric).** Use to reduce the gain of the received signal under strong signal conditions.
- 6. MIC GAIN CONTROL: (inner dual concentric).** Adjust the microphone gain in transmit and PA modes. This controls the gain to the extent that full talk power is available several inches away from the microphone.
- 7. DIMMER CONTROL:** Controls the brightness of the meter lamp, channel display digits, +10KHz LED, RB LED and the RX/TX LED. It does not control the brightness of the SWR alert LED. That LED is always at maximum brightness.
- 8. RF POWER CONTROL:** This control allows the user to adjust RF power output.
- 9. CHANNEL SELECTOR:** This switch selects any one of the forty channels desired. The selected channel number is on the LED readout directly above the Channel Selector knob.
- 10. RX/TX LED:** This LED lights red to indicate the unit is in the transmit mode. It lights blue to indicate the unit is in the receive mode.
- 11. METER:** Indicates received signal strength, transmitter output power and SWR.
- 12. BAND SELECTOR:** This switch is used to select the band.
- 13. TIME CONTROL: (outer dual concentric).** This control is used to set the interval of the echo effect.
- 14. ECHO CONTROL: (inner dual concentric).** This control is used to set the amount of the echo effect.
- 15. SWR/OFF/R.B. SWITCH:** This switch controls the function of the meter during the transmit mode. In the "SWR" position, the meter indicates the Standing Wave Ratio (SWR) of your antenna (accurate at maximum power output). There are no adjustments because the SWR circuit in this radio calibrates itself automatically. When in the RB position, the radio transmits an audio tone at the end of your transmission to indicate that transmission has ended. As a courtesy to others, use the Roger Beep only when necessary. The SWR function and the RB function cannot be used at the same time.

- 16. NB/ANL/OFF SWITCH:** In the ANL position, the Automatic Noise Limiter circuit is activated. In the NB/ANL position, the RF Noise Blanker is also activated. This Noise Blanker is very effective for repetitive impulse noise such as ignition interference. Both ANL and NB are off when this switch is in "OFF".
- 17. MODE (PA/FM/AM) SWITCH:** This switch is used to select PA, FM, or AM mode of operation. When you set to PA position, the transceiver acts as a public address amplifier. Before operating PA, you must first connect an external PA speaker (8 ohm, 4-watt) to the PA Speaker jack on the unit rear panel.
- 18. MOD LAMP/OFF/+10KHz SWITCH:** When in the MOD LAMP position, the Mod Lamp circuit is activated. When the switch is in the +10KHz position, the frequency is shifted up 10KHz. When this switch is in the OFF position, the Mod Lamp does not function and the frequency is not shifted up.
- 19. TALKBACK/ECHO/OFF:** When this switch is in the TALKBACK position, it is used to monitor your own voice in the radio speaker. For example, you could use this feature to compare different microphones. When in the ECHO position, it will add an echo effect to your voice. Both Echo and Talkback are off when this switch is in the OFF position.
- 20. +10KHz LED:** This LED lights green when the frequency is shifted up 10KHz.
- 21. CHANNEL INDICATOR:** Numbered LED indicates the selected channel you wish to operate on.
- 22. RB/SWR LED:** This LED lights red to indicate an SWR that is higher than around 3:1. It is not an exact indicator of a 3:1 SWR. When it lights red, please check your SWR using the built in SWR circuit. This LED lights blue to indicate the Roger Beep circuit is on. If the Roger Beep circuit is on and the SWR is high, during transmit both the blue and red segments of this LED will light. The color will appear to be purple.

REAR PANEL



- 1. ANTENNA.** Accepts 50 ohm coaxial cable with a type PL-259 connected.
- 2. POWER.** Accepts 13.8V DC power cable with built-in 10 amp fuse.
- 3. F.C.** This socket is for optional FREQUENCY COUNTER model FC-347. The FC347 will indicate the transmit and receive frequency.
- 4. PA. SP.** Used to connect a PA speaker (8 ohm 4W) for PA operation. Before operating PA you must first connect a PA speaker to this jack.
- 5. EXT SP.** Accepts 4 to 8 ohms, 5-watt external speaker to be connected. When external speaker is connected to this jack, the built-in speaker is automatically disconnected..

PRESS-TO-TALK MICROPHONE

The receiver and transmitter are controlled by the press-to-talk switch on the microphone. Press the switch and the transmitter is activated, release switch to receive. When transmitting, hold the microphone two inches from the mouth and speak clearly in a normal "voice". The radios come complete with low-impedance (500 ohm) dynamic microphone. For installation instruction on other microphones, see next section, "ALTERNATE MICROPHONES AND INSTALLATION".

OPERATING PROCEDURE TO RECEIVE

1. Be sure that power source, microphone and antenna are connected to the proper connectors before going to the next step.
2. Turn unit on by tuning **VOL** control clockwise on your transceiver.
3. Set the **VOLUME** for a comfortable listening level.
4. Set the **MODE** switch to the desire mode.
5. Listen to the background noise from the speaker. Turn the **SQUELCH** control slowly clockwise until the noise **JUST** disappears (no signal should be present). Leave the control at this setting. The **SQUELCH** is now properly adjusted. The receive will remain quiet until a signal is actually received. Do not advance the control too far, or some of the weaker signals will not be heard.
6. Set **CHANNEL** selector switch to the desired channel.
7. Set the **RF** gain control fully clockwise for maximum **RF** gain.

OPERATING PROCEDURE TO TRANSMIT

1. Select the desired channel of transmission.
2. Set the **MIC GAIN** control fully clockwise.
3. If the channel is clear, depress the push-to-talk switch on the microphone and speak in a normal voice.

ALTERNATE MICROPHONES AND INSTALLATION

For best results, the user should select a low-impedance dynamic type microphone or a transistorized microphone. Transistorized type microphones have a low output impedance characteristic. The microphones must be provided with a four-lead cable. The audio conductor and its shielded lead comprise two of the leads. The fourth lead is for receive control, and the third is for transmit control. The microphone should provide the functions shown in schematic below.

4 WIRE MIC CABLE

| Pin Number | Mic Cable Lead |
|------------|------------------|
| 1 | Audio shield |
| 2 | Audio Lead |
| 3 | Transmit control |
| 4 | Receive Control |

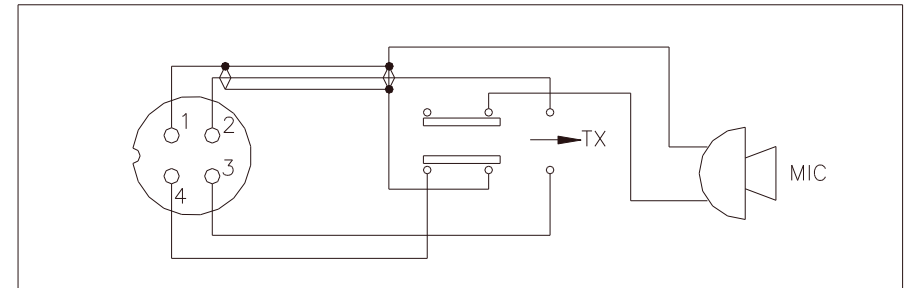


Fig. 1 Your transceiver microphone schematic.

If the microphone to be used is provided with pre-cut leads, they must be revised as follows.

1. Cut leads so that they extend 7/16" beyond the plastic insulating jacket of the microphone cable.
2. All leads should be cut to the same length. Strip the ends of each wire 1/8" and tin the exposed wire.

Before beginning the actual wiring read carefully, the circuit and wiring information provided with the microphone you select. Use the minimum head required in soldering the connections. Keep the exposed wire lengths to a minimum to avoid shorting when the microphone plug is reassembled.

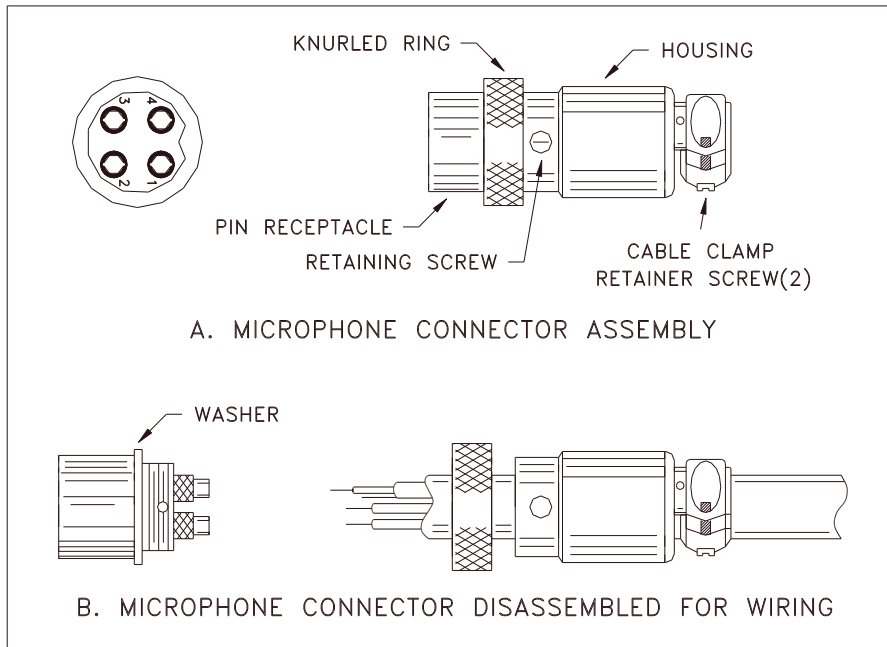


Fig. 2 Microphone plug wiring

1. Remove the retaining screw
2. Unscrew the housing from the pin receptacle body
3. Loosen the two cable clamp retainers.
4. Feed the microphone cable through the housing, knurled ring and washer as shown Fig. 2.
5. The wires must now be soldered to the pins as indicated in the above wiring tables. If a vise or clamping tool is available it should be used to hold the pin receptacle body during the soldering operation, so that both hands are free to perform the soldering. If a vise or clamping tool is not available, the pin receptacle body can be held in a stationary position by inserting it into the microphone jack of the front panel. The numbers of the pins of the microphone plug are shown in Fig. 3, as viewed from the back of the plug. Before soldering the wire to the pins, pre-tin the wire receptacle of each pin of the plug.

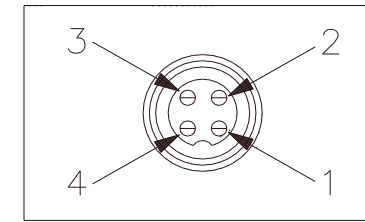


Fig. 3 Microphone plug pin numbers viewed from rear of pin receptacle.

Be sure that the housing and the knurled ring of Fig. 2 are pushed back onto the microphone cable before starting to solder. If the washer is not captive to the pin receptacle body, make sure that it is placed on the threaded portion of the pin receptacle body before soldering.

If the microphone jack is used to hold the pin receptacle during the soldering operation, best results are obtained when the connections to pins 1 and 3 are made first and then the connections to pins 2 and 4. Use a minimum amount of solder and be careful to prevent excessive solder accumulation on pins, which could cause a short between the pin and the microphone plug housing.

6. When all soldering connections to the pins of the microphone plug are complete, push the knurled ring and the housing forward and screw the housing onto the threaded portion of the pin receptacle body. Note the location of the screw clearance hole in the plug housing with respect to the threaded hole in the pin receptacle body. When the housing is completely threaded into the pin receptacle body, a final fraction of a turn either clockwise or counterclockwise may be required to align the screw hole with the threaded hole in the pin receptacle body. When these are aligned, the retaining screw is then screwed into the place to secure the housing to the pin receptacle body.
7. The two cable clamp retainer screws should now be tightened to secure the housing to the microphone cord. If the cutting directions have been carefully followed, the cable clamp should secure to the insulating jacket of the microphone cable.
8. Upon completion of the microphone plug wiring, connect and secure the microphone plug in the transceiver.

MEMO

MEMO

MEMO

WARRANTY

This radio is covered by a three year limited parts and labor warranty.

- “Limited” means that we will repair problems caused by factory defects or normal use at no charge.
- Before returning a radio to us for warranty service, please call our Service Department for a Repair Authorization Number (RAN). This RAN must be written below your return address on the outside of the shipping box. Boxes which arrive without an RAN will be refused, and the shipping company will return the unopened box to you. Be sure to have a pen and paper ready along with the serial number of your radio before calling. We will give you the RAN and our shipping address over the phone. The telephone number of the Service Department is (760) 480-8800, and we suggest calling between 10:00 AM and 4:00 PM Pacific Time.
- Please include a note with a detailed description of the symptoms. This is important because it will help the technician who works on your radio to locate your problem. Intermittent problems are easily overlooked, so be sure to give as much detail as possible in your note. Also, please include your telephone number in case our technicians have any additional questions.
- Do not send your bracket, power cord or microphone unless we ask for these items during our telephone conversation.
- You are responsible for getting the radio safely to us. (We suggest using United Parcel Service.) You must pay to ship the radio to us, and we will pay to ship the radio back to you. Since we use UPS and they do not ship to Post Offices boxes, please provide us with a street address for the return of your radio.
- We will repair and return your radio as soon as we can. We appreciate your choosing a Galaxy radio and we want you to be on the air as much as possible!
Be sure to visit our web site at

www.GalaxyRadios.com